

Create your individual nursing care bed  
with the bock side rails systems.

**As much protection as necessary,  
as much freedom as possible.**

Flexible  
systems,  
also for  
retrofit



**.bock<sup>®</sup>** ///



Side rails can help.  
And it helps, to have a choice.

Thanks to its various side rail systems, bock as a quality-oriented nursing care bed specialist, enables a flexible and demand-oriented care. With the experience of more than 100 years, the bock side rails have always been developed with real and most different care scenarios in mind, such as institutional care as well as care at home, all of them of course tested according to DIN EN 60601-2-52.

**„Moreover, the bed rails [side rails] support the elderly during various care measures, such as washing or moisturizing the back. Here, the immobile resident in need of care can grasp the bed rails [side rails] with one hand and thus keep himself in a lateral position. The boundary makes the resident feeling safe, as he or she cannot fall out of the bed during the care measure.“**

(<https://www.pgsg.de/seiten/openpgsg/hintergrund-standard-bettgitter.htm>, the Altenpflegemagazin im Internet [www.altenpflegemagazin.de](http://www.altenpflegemagazin.de)) Altenpflege-magazin (elderly care magazine)

Notes of the bock editorial team in square brackets.



„As a nursing home manager,  
I am responsible for the safety.  
With bock I can assume  
this responsibility.“

- ⊕ Responsibility for the integrity of residents and caregivers
- ⊕ Residents feel safe not being able to fall out of the bed.  
Especially during the basic care process at a possible height of  
80 cm, side rails are indispensable
- ⊕ With the bock systems, all necessary and required nursing care bed  
scenarios can be dealt with
- ⊕ The head section solution (covering > 50% of the bed side) offers  
safety and protection without court order while maintaining  
self-determination
- ⊕ Creation of a homely atmosphere
- ⊕ Flexible systems enable a good cost planning
- ⊕ Quick and easy handling for caregivers
- ⊕ Ideal addition to the bock nursing care beds



## Side rails: Backgrounds and facts.

“Furthermore, the court clarifies that a divided bed rail [side rail] is not a custodial measure and therefore does not require a court approval for its installation.”

<https://seniorenheim-magazin.de/branchennews/neuere-tendenzen-in-der-rechtsprechung-zum-bettgitter>  
article: Neuere Tendenzen in der Rechtsprechung zum Bettgitter (Recent trends in the jurisdiction on bed rails)

“Pay attention to the working height: If you adjust the nursing bed to the appropriate working height for washing, dressing or changing bed sheets, you want to ensure a good working position.”

<https://www.bgw-online.de/DE/Home/Branchen/Pflege/gesunder-Ruecken-Branchennews.html>

Notes by the bock editorial team in square brackets.  
For international business please consider national regulations.

“The side guard usually consists of a side rail, which can be pushed up if necessary. It is intended to protect the resident and prevent him or her from falling out. Side rails are also used to protect restless patients. (...) There are continuous and divided side rails. The latter are preferred because the residents do not feel confined and they are in most cases completely sufficient.”

(<https://www.mobil-bleiben.de/hilfsmittel/pflegebett-seniorenbett/pflegebett/>)

# Which side rail variant is recommended for which care situation?

## Head section



- ⊕ Head section covering > 50%
- ⊕ No custodial measure, but still protection against falling out (e.g. at night)
- ⊕ High self-determination, as leaving the bed is still possible
- ⊕ Encouragement of mobility
- ⊕ In combination with a low foot-end panel, a good room visibility is offered to the residents

## Short divided



- ⊕ Head and foot end side rails with a centre gap for entry and exit
- ⊕ Elements can be used separately from each other
- ⊕ The centre gap can be used for mobilisation and offers self-determination
- ⊕ No custodial measure, but still safe protection (e.g. at night)

## Long divided



- ⊕ Ideal solution for every care level
- ⊕ High flexibility in daily care operations
- ⊕ Elements can be used separately from each other
- ⊕ Mobilisation support and high level of self-determination with lowered side rails at the foot end

## Continuous



- ⊕ Simple, safe and economical



# System SR1

## Modern safety and design



SR1  
Operating aid

### SR1: modern safety and design.

The premium side rails SR1 from bock are convincing due to their modern design, easy handling and high flexibility. Three different module lengths enable different variants per bed side.

The caregivers can decide flexibly and according to the situation, which protection is required.

For a high feel-good factor, the module can be individually adapted to the colour of the bed.

In closed position, they nestle seamlessly against the bed and are thus hardly noticeable. Thanks to their ergonomical design, the side rails are on the one hand easy to use and on the other hand they leave a pleasurable feeling when sitting on the bed edge.

For a high flexibility, all modules can be quickly and easily retrofitted or removed. Each module can be mounted on both sides of the bed.

- ⊕ Gentle and easy handling
- ⊕ High flexibility due to three different lengths
- ⊕ Backward compatible with some bock bed models
- ⊕ Compact height
- ⊕ Optimal haptics
- ⊕ Discreet and straight design
- ⊕ Full implementation of the standard DIN EN 60601-2-52



# System SR1

## Technical data

### closed



### open



### Combinations

40/60

• incl. soft-close



60/40

• incl. soft-close



60/0

• incl. soft-close



100

• excl. soft-close



SR1  
Operating aid





# System SR2

Safe and proverbially transparent



SR2  
Application aid

## SR2: safe and proverbially transparent.

The bock side rail SR2 is the ideal basic solution for a safe fall-out protection.

The slim design supports the simple and intuitive operation:

With one only hand move, the side rails can be pulled up effortlessly.

The simple release mechanism enables a quick lowering.

With a length of approx. 1,200 mm, the SR2 allows a safe and comfortable entry and exit at any time.

- ⊕ Slim design
- ⊕ Easy handling due to low own weight
- ⊕ Quick mounting on the bed
- ⊕ Quick, easy and intuitive operation
- ⊕ Full implementation of the standard DIN EN 60601-2-52

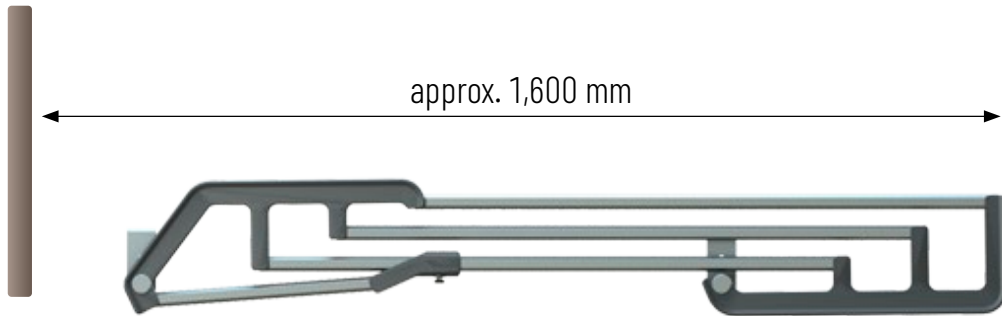




# System SR2

## Technical data

**closed**



Head end panel (Gap: < 60 mm)

**open**



Head end panel (Gap: < 60 mm)



SR2  
Operating aid



# System SR3

## The classic side rails



### SR3: the classic side rails.

The comfortable bock side rails SR3 are the classic solution for professional care. The system that is proven for years combines flexibility, high safety and provides optimal protection in daily care processes.

For an optimum of haptics and user-friendliness, all bars are equipped with central grip groove on both sides.

The surfaces are easy to clean, the choice of durable materials ensure extreme stability.

Configure your nursing care bed from four various side rail options and individual colour options.

One highlight of SR3: With many bock care bed models, the extendible side rails grow automatically with the extension of the bed. No additional elements are required.



Fig. SR3 without integrated length extension

- ⊕ High variety of options and various colours
- ⊕ Integrated length extension of the side rails for certain Bock care bed models
- ⊕ Proven for years
- ⊕ Bars in wooden colours for a homely atmosphere
- ⊕ Optionally lockable in the lowest position
- ⊕ Full implementation of the standard DIN EN 60601-2-52



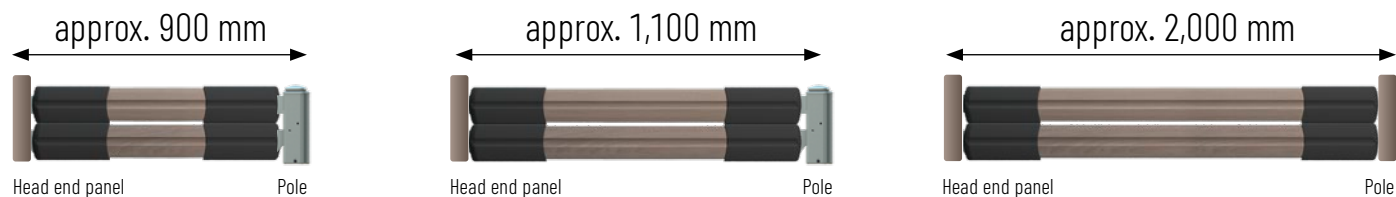
SR3  
Operating aid



# System SR3

## Technical data

### closed



### open

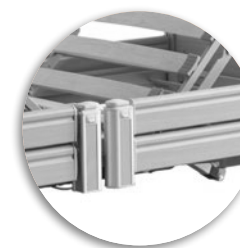
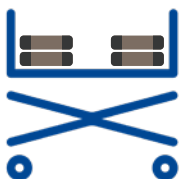


Fig. SR3 without integrated length extension

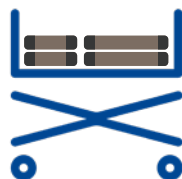
### Combinations

All combinations require guides which are basically integrated to the end panels. Upon request they are also available as freestanding solution (with telescopic poles). According to the bed model the side rails come with high-quality plastic cover elements (extendible version) or without them (non-extendible version).

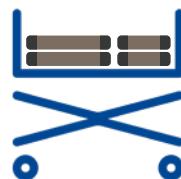
40/40



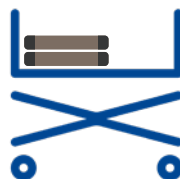
40/60



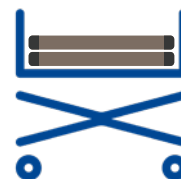
60/40



60/0



100



SR3  
Operating aid

# Equip the beds with system. Very simple.



**SR1**



Art.-No.*	Art.-No. Bed	Bed model
412A...	220	livorno low
412A...	225	practico 25 80
412A...	224	practico 25 80 plus
412A...	223	floorline 15 80
412A...	420	practico alu 25 80
412A...	423	practico alu plus
412A...	422	practico ultra low 9.5 80**
412A...	440/441	stellar single and double bed

\* Kindly note, that the codes behind the A... are variants and thus depending on the ordered version.

\*\* From 01.10.2021: floorline 9.5|80



**SR2**



Art.-No.*	Art.-No. Bed	Bed model
413A...	261	domiflex
413A...	266	domiflex low
413A...	263	domiflex low classic
413A...	271	domiflex 2 with Push-and-Ready
413A...	272	domiflex 2 wash
413A...	293	combiflex
413A...	281	belluno
413A...	227	practico economic
413A...	220	livorno low
413A...	225	practico 25 80
413A...	224	practico 25 80 plus
413A...	223	floorline 15 80



**SR3**

with integrated length extension



Art.-No. Bed	Bed model
224	practico 25 80 plus
223	floorline 15 80
420	practico alu 25 80
423	practico alu plus
422	practico ultra low 9.5 80
440/441	stellar single and double bed



**SR3**

without integrated length extension



Art.-No. Bed	Bed model
295	combiflex fc
220	livorno low
225	practico 25 80
Only with continuous side rails	
261	domiflex
266	domiflex low
263	domiflex low classic
264	domiflex 185
271	domiflex 2 with Push-and-Ready
272	domiflex 2 wash
293	combiflex
281	belluno
227	practico economic
267	adiflex 220
245	adilec 280



# Side rails in use: the advantages



"I want a bed which perfectly adapts to my changing needs."

## For residents

- ⊕ Safety and hold during the basic care process, especially if the bed is raised to 80 cm
- ⊕ No risk of falling out due to accidental release of the side rails
- ⊕ Optimal combination of protection and freedom by means of various modules and systems
- ⊕ Individually configurable variants for every care level
- ⊕ High level of cosiness due to design elements



"The better I can care my residents, the better they feel"

## For caregivers

- ⊕ Intuitive, safe and effortless operation
- ⊕ Reduction of injury risks thanks to well thought-out systems
- ⊕ Flexible and demand-oriented care thanks to various systems and modules
- ⊕ Safe operation of basic care at a back-friendly working height



.bock<sup>®</sup>///

® registered trademark  
Status: 08 | 2021  
Subject to technical changes.  
Picture credits: Nicola Rehage, Gütersloh



Hermann Bock GmbH  
Nickelstraße 12  
33415 Verl  
Germany

phone: +49 (0) 5246 9205 0  
fax: +49 (0) 5246 9205 25  
web: [www.bock.net](http://www.bock.net)  
e-mail: [info@bock.net](mailto:info@bock.net)